

# End-to-End

## The Parish Magazine of Rivenhall and Silver End



QUEEN ELIZABETH THE 2ND  
1926 -2022



**OUR QUEEN**

**October**

**2022**

**50p**

## **The Following are our services For October 2022**

St Nicholas Witham Joint Service Holy Communion 10 am

**2<sup>nd</sup> October**

**16<sup>th</sup> Sunday after Trinity**

**Harvest Festival**

9.30 am St Francis

Holy Communion

11 am St Mary's

All Age Worship

**9<sup>th</sup> October**

**17<sup>th</sup> Sunday after Trinity**

9.30 am St Francis

Morning Prayer

11 am St Mary's

Holy Communion

3 pm St Francis

Pet Service

**16<sup>th</sup> October**

**18<sup>th</sup> Sunday after Trinity**

9.30 am St Francis

HC

11 am St Mary's

Matins

**23<sup>rd</sup> October**

**19<sup>th</sup> Sunday after Trinity**

9.30 am St Francis

Morning Prayer

11 am St Mary's

Holy Communion

**30<sup>th</sup> October**

**All Saints Joint Service Terling**

**11 am All Saints Church at Terling**

### **Church Contacts**

All Contact should be Via the Churchwardens

Churchwarden Ann Clarke

01376 514825

Churchwarden Peter Hope

01376 502605

Email [phope02@gmail.com](mailto:phope02@gmail.com)

Rivenhall Contact Carole McCarthy

01376 512781

Silver End Contact Ruth Aitken

01376 583846

Rivenhall Website

[www.stmarysrivenhall.co.uk](http://www.stmarysrivenhall.co.uk)

St Francis Silver End Website

[www.st-francis.org.uk/](http://www.st-francis.org.uk/)

Contact the Editor 07904 235101 or [phope02@gmail.com](mailto:phope02@gmail.com)

## **In Remembrance of Queen Elizabeth.**

### **Rev. Jonathan Pritchard**

It came so quickly. We had only just celebrated her late Majesty's Platinum Jubilee. And now here we were mourning her death. We tend to share what people mean to us after they have died: at least her Majesty heard the love and respect of our nation for her at her Jubilee celebrations.

Just 10 days. Blanket news coverage telling and retelling the same stories, going over everything in minute detail again and again. It's what we do when someone dies. Talking it through and talking it out. Only the scale of this death was so much bigger: perhaps 4 Billion people saw something of the State Funeral on TV. Half the world. And us? We witnessed 10 days of unfolding and developing events too, from Balmoral to Holyrood Palace, lying in state in St Giles Cathedral and Westminster Hall. Great church services and processions marking one soul's progress from this life, culminating in the State Funeral. All helped make sense of our late beloved Queen's death. But not just what we saw on the news but here too. Bells rung in each of our churches - a plaintive haunting toll of latent grief. Churches quiet and still, dressed in purple mourning. Books of Condolence reverently placed alongside a picture of the Queen, candles and flowers in St Mary's Rivenhall and St Francis Silver End and in all our churches. Prayers said in church and community. Sunday sermons and services, public prayer, private grief. And the bells tolling again, marking a space of shared silence throughout our land.

But behind it all is faith. Not belief. Just faith. Holding the shifting world with God. In the soaring music of Westminster Abbey and the timeless language of the old Prayer Book. Faith in God who is not doing anything as such: but just is. Divine being and love and grace. Compassion and forgiveness. And the freedom that helps us to serve others because of God who simply is. This, I think, lies behind the the lifelong service of our late Queen. Faith.

The Poet Laureate, Simon Armitage puts it really well.

A promise made and kept for life – that was your gift ...  
The country loaded its whole self into your slender  
hands,

Hands that can rest, now, relieved of a century's  
weight.

I think I understand better how Queen Elizabeth was a force  
for good in our world. But now another pair of hands takes up  
this weight on our behalf ... and I'm beginning to get used to  
the changed words of the National Anthem. We pray for him  
in the midst of his grief and calling. God save the King.

\*\*\*\*\*

## **Readings and Collects for October 2022**

### **2<sup>nd</sup> October 16<sup>th</sup> Sunday After Trinity**

#### **Harvest Festival**

Deuteronomy 26:1-11

Philippians 4:4-9

John 6:25-35

#### **Collect**

Lord of creation,  
whose glory is around and within us:  
open our eyes to your wonders,  
that we may serve you with reverence  
and know your peace at our lives' end,  
through Jesus Christ our Lord.

### **9<sup>th</sup> October 17<sup>th</sup> Sunday After Trinity**

#### **Holy Communion**

#### **Readings**

2 Kings 5:1-3, 7-15c

2 Timothy 2:8-15

Luke 17:11-19

#### **Collect**

Gracious God,  
you call us to fullness of life:  
deliver us from unbelief  
and banish our anxieties  
with the liberating love of Jesus Christ our Lord.

## **16<sup>th</sup> October 18<sup>th</sup> Sunday After Trinity**

### **Matins**

#### **Readings**

Genesis 32:22-31

2 Timothy 3:14-4.5

Luke 18:1-8

#### **Collect**

God, our judge and saviour,  
teach us to be open to your truth  
and to trust in your love,  
that we may live each day  
with confidence in the salvation which is given  
through Jesus Christ our Lord.

## **23<sup>rd</sup> October 19<sup>th</sup> Sunday after Trinity**

### **Holy Communion**

#### **Readings**

Isaiah 45:22-end

Romans 15:1-6

Luke 4:16-24

#### **Collect**

Faithful Lord,  
whose steadfast love never ceases  
and whose mercies never come to an end:  
grant us the grace to trust you  
and to receive the gifts of your love,  
new every morning,  
in Jesus Christ our Lord.

## **30<sup>th</sup> October All Saints Day**

### **Joint Benefice service of HC at All Saints Terling**

#### **Readings**

Daniel 7:1-3, 15-18

Ephesians: 1: 11-end

Luke 6:20-31

#### **Collect**

God of holiness,  
your glory is proclaimed in every age:  
as we rejoice in the faith of your saints,  
inspire us to follow their example  
with boldness and joy;  
through Jesus Christ our Lord.

## **The 50/50 Club July 2022 winners**

1<sup>st</sup> Mrs P French    2<sup>nd</sup> Mrs G Fost    3<sup>rd</sup> R & S Fossett

\*\*\*\*\*

### **A MESSAGE FROM THE WITHAM MOTHERS UNION**

As many branches of The Mothers' Union in the Witham Benefice have closed.

We have 'outreached' to surrounding parishes. Lynette Abbott gave a short talk, to both Rivenhall & Silver End churches on the ideals of the M.U. and how it is open to both women and men with Christian beliefs

**This is to inform anyone interested that our October meeting takes place Thursday 27<sup>th</sup> in St. Nicolas church hall, Witham.**

**The speaker being Elizabeth Marshall on the subject 'English for Women'**

**With tea and cakes afterwards.**

\*\*\*\*\*

### **RIVENHALL PARISH COUNCIL**

**Notes of the meeting held on 6<sup>th</sup> September 2022**

**At Henry Dixon Hall**

**These notes are an abridged version of the minutes**

**Present:** Cllrs. Abbott (Chairman), Wright (Vice Chairman), Cairns, Elliott, Prime and Turner.

**Also present:** Parish Clerk.

#### **Chairman's Report**

The planning application for the A12 widening and rerouting around Rivenhall End has now been submitted to the Government by National Highways. Details are due about public engagement in the planning process.

However, there is uncertainty regarding the A120, which was being promoted by ECC on 'Route D', which was to have joined the A12 between Kelvedon and Rivenhall End. There appears to be doubt about whether this route will be accepted by the Government and despite requests for clarification, confirmation either way is still awaited.

The Planning Appeal for the Bellway Phase 4 site of up to 230 houses on land off Rectory Lane is expected to open on December 6<sup>th</sup>. There will be several months of preparation for the Appeal with Proofs of Evidence required on each of the

main topics.

The additional consultation period for the further information on the solar farm application ended on 6<sup>th</sup> September. There is no date yet fixed as to when BDC will decide the application.

The Parish Council will continue to update residents about these important planning issues affecting the parish. – [**Post meeting update – information about the A12 application and the Bellway Appeal are included at the end of these notes**].

### **Apologies for absence**

An apology was received from ECC Cllr. Playle who had e-mailed a report that had been circulated. Also an apology from Cllr. A'Lee.

### **Public Forum**

Problems were reported regarding certain planning conditions relating to Bellway's Bluebells estate and the Clerk will request information from BDC re compliance.

### **Matters for Discussion**

#### Glass bus shelter, Oak Corner

Despite reminders from the Clerk replies are still awaited from ECC regarding a satisfactory resolution to the issue of the seating.

#### Replacement trees due to drought conditions

Two trees have died at the recycling area on Oak Road due to the drought conditions as well as some of those newly planted on the Albert Moss Playing Field. Approximately 25 replacement whips are required when suitable replacements can be obtained.

#### Plaque for tree planting

The Chairman will draft some wording and obtain a quotation for a suitable plaque for consideration at the October meeting.

#### Three Parishes Meeting

Awaiting a response from Silver End Parish Council re possible continuation in current format.

#### Highway Maintenance

ECC has still not repaired the retaining wall at the St. Mary's Road/Church Road footway steps. Quotations will be obtained with the possible aim of RPC organising this repair independent of ECC.

The Chairman is anticipating a meeting with National Highways re the condition of the footways/cycleway along the A12 and to discuss the current condition of the bus shelters and the future siting of new shelters when the road is de-trunked after the A12 widening is completed.

The Chairman has reported a potentially dangerous broken drain cover in Henry Dixon Road near Fair Rest.

The ECC pothole reporting system is not dealing with long standing issues.

A highway repair in Oak Road has now sunk and holds water which gets splashed about in wet weather.

Many streetlights remain dysfunctional and the Chairman will report them again to ECC.

Enquiries made to BDC confirm that obstructive pavement parking still remains a Police enforcement matter.

### General Maintenance

Village Green posts - the Clerk reported that BDC has offered to match fund 50% of the repair/repainting cost. It was **agreed** to go ahead with this work which includes repainting all the posts on the 2 village greens and replacements where needed.

Vehicles parked on the village green along Beech Road – to be monitored over the coming winter before a decision is made on possible measures to protect the green.

Public right of way from A12 to Hollow Road - councillors recognised the regular use and care of these cross field footpaths by a local resident.

The waste bin outside Oak Stores tends to overflow - BDC will be requested to provide an additional bin.

Braxted Road closure due to damage to Appleford Bridge – Yet again the bridge has been badly damaged by a vehicle collision. Whilst the road is closed, BDC has been requested to clear the litter along the road.

Maintenance contractor work – to be requested to trim back the overhanging growth along Henry Dixon Road from the layby near the A12 bridge to the commencement of Braxted Road and also the overhanging trees along Church Road.



## **Planning Applications**

**22/02005/FUL:** Classroom extension etc. – Rivenhall School.  
A 'No Comments' letter had been forwarded to BDC.

**21/03735/FUL:** Solar farm west of park Road (additional information). A letter was sent to BDC reiterating RPC's previous comments recommending refusal of the application. The parish council will aim to be represented at the BDC Planning Committee, when the date is known for the application to be decided.

## **Planning Appeals**

The Bellway Phase 4 Appeal Hearing is expected to open on 6<sup>th</sup> December 2022, but no venue yet announced.

## **Ongoing Major Planning Issues**

### A12 to A120 widening

On 12<sup>th</sup> August National Highways submitted an application for an order, known as a Development Consent Order, which if approved will provide consent for delivery of the A12 Project. A series of briefings for local councillors is due and the parish council will update residents on the planning process when full details are known.

### BDC Local Plan

BDC formally Adopted Section 2 of the new Local Plan for Braintree District on 25<sup>th</sup> July 2022.

### Rivenhall Airfield Major Waste Site

Application **ESS/34/15/BTE/NMA3**: The NMA application for abnormal loads was considered by the ECC Development & Regulation Committee due to the high public interest and it was resolved to grant the NMA despite strong local objections. The next Site Liaison meeting is due in September.

## **Information exchange and items for the October agenda**

- a. BDC had confirmed, following an enquiry by the Chairman, that the hedge watering system has not been working at Bellway Bluebells estate - which explains the scorching/drying damage to the hedge visible from the road. The hedge is required via planning conditions to be maintained. Both Bellway and the company who moved/are maintaining the

hedge have been contacted and told to take remedial action, though it may be too late for some parts of the hedge.

- b. The Clerk reported that it will be necessary to recruit a replacement person to update the RPC website on a regular basis. Enquiries will be made and the matter discussed further at the October meeting.
- c. The BDC Dog Warden has checked/patrolled the Albert Moss Playing Field following reports of dog fouling.
- d. The felled timber from Tarecroft Wood has now been removed from within the wood.

### **Dates of future meetings**

4<sup>th</sup> October and 1<sup>st</sup> November 2022, both at Rivenhall Village Hall, starting at 7pm.

**Update on Bellway Appeal** – Up to 230 houses on land off Rectory Lane Rivenhall.

Following BDC refusing this application, Bellway submitted an Appeal and the process for that Appeal is now underway. Residents who previously submitted representations to BDC will have those forwarded to the Appeal Inspector. Residents who did not write in during the original application period can still write into the Appeal, as can those who previously wrote in, if they wish to add additional comments.

The deadline for comments is 14<sup>th</sup> October and can be made via the Planning Inspectorate website at:

<http://acp.planninginspectorate.gov.uk/>

or by e-mail to

[helen.skinner@planninginspectorate.gov.uk](mailto:helen.skinner@planninginspectorate.gov.uk)

All representations must quote the Appeal Reference APP/Z1510/W/22/3305099

The Appeal documents can be found on the BDC website at

[www.braintree.gov.uk/pa](http://www.braintree.gov.uk/pa)

under reference 22/00063/REF

The venue for the Appeal is not yet known. The Parish Council objected to the original application and will further respond to the Appeal process, urging that the Inspector rejects the plans, which would result in the countryside between Rivenhall and Witham being developed, the loss of the rural setting of Rectory

Lane and a new road being built from Rickstones Road into the development with resultant increase of traffic.

**Update on A12 application**

The planning application for the A12 widening has been accepted by the Government and the application process, for what is called a Development Consent Order (DCO), is now underway.

The DCO process is different to local planning applications (which are usually decided by BDC or ECC). The A12 application is of 'national importance' and is decided by a Government Inspector following an Examination.

The application is to widen the A12 to 6 lanes (3 each way) between Chelmsford and Colchester, and for Rivenhall Parish, the A12 will be rebuilt on a new route just south of Rivenhall End.

Full details on the application can be found on the Planning Inspectorate's National Infrastructure Planning website at:

<https://infrastructure.planninginspectorate.gov.uk/projects/eastern/a12-chelmsford-to-a120-widening-scheme/?ipcsection=docs>

Residents can register to participate in the Examination and to make representations from 22<sup>nd</sup> September to 4<sup>th</sup> November via the web page:

<https://infrastructure.planninginspectorate.gov.uk/projects/eastern/a12-chelmsford-to-a120-widening-scheme/>

Alternatively, you can request a hard copy of the registration/representation form by telephoning 0303 444 5000, quoting "A12 reference TR010060".

There is also an e-mail address to request information:

[A12chelmsfordA120wide@nationalhighways.co.uk](mailto:A12chelmsfordA120wide@nationalhighways.co.uk)

\*\*\*\*\*

**Sky Notes October 2022**

Jupiter remains bright and prominent through October, well placed for viewing during the late evening in the South. The Moon will be just below Jupiter on the evening of the 8th. The Moon is Full on the following night of the 9th and continues to climb the sky as autumn progresses, while the Sun gets

lower.

Mars continues to brighten through the month and is visible in the East in Taurus by 11pm. The Red Planet will continue to get brighter until early December when it will be at its best for 2 years. Whilst all the planets further out from the Sun than the Earth reach Opposition and are at their brightest at a point in time each year, Mars only does so every 2 years due to its orbit relative to that of the Earth.

On the morning of 25th October there will be a partial eclipse of the Sun as the Moon partly covers the disc of the Sun for nearly 2 hours. The eclipse is greatest in the north of the UK. From the London area



about 15% of the solar disc will be obscured at mid-eclipse which takes place at 11am BST. If skies are clear the eclipse can be viewed safely in Rivenhall where a projection will be set up – details will be posted to Rivenhall Observatory facebook page. The usual warning – no attempt should be made to view the eclipse directly.

The Sun is steadily becoming more active in its 11-year cycle, and sunspots are appearing more frequently. The solar cycle is closely linked to the Sun's complex magnetic field, with sunspots being areas of intense magnetic fields, and cooler than the surrounding surface of the Sun, so they appear dark by contrast. During the eclipse on the 25th, sunspots may be visible using the safe projection set up.

Clocks revert to GMT (back 1 hour) on Sunday 30th October.

Sky Watcher

\*\*\*\*\*

## **End to End Nature Care.**

### Bird and Bat Boxes:

Following another evening session spent constructing boxes we have some stock which is available free of charge to anybody locally who is willing and able to house one in a suitable location. We have typical boxes for Blue Tits, House Sparrows and Robins and can bespoke build anything required, even up to a Tawny Owl box. The bat boxes provide roost sites for various species, primarily the various Pipistrelles. Autumn is a good time to put up a bird or bat box as they can potentially provide a winter roosting site as well as this allowing them to become a familiar part of the local landscape and therefore overcome any neophobic tendencies amongst potential occupants. If you would like one then please get in touch (details below).

### Photography Evening:

Throughout the group's Wednesday evening outdoor meetings schedule many of us are busy with cameras, capturing images of the various plants and animals we see. This isn't just restricted to those occasions either of course. On **Wednesday 19<sup>th</sup> October at 8pm at Silver End Congregational Church**, Silver Street (postcode CM8 3QF) we are holding a photography evening when some of us will display a selection of images projected onto a large screen. All are welcome, there is a small fee of £2 per head to cover costs but that does include a hot drink and biscuits. If you would like to come along and show some of your local nature photographs then please do so.

### Science & Nature Quiz:

This annual event in our calendar will be held on Wednesday 16<sup>th</sup> November at 8pm, also at Silver End Congregational Church. It's just for fun and although very much based around science and nature our quizmaster Andrew Moss ensures it is interactive and accessible for all. Again, everybody is welcome and it's £2 per head with refreshments.

### Winter Social Evening:

We have a pre-Christmas social evening being held on **Wednesday 14<sup>th</sup> December at "Fiddlesticks", 44 Strawberry Lane, Tolleshunt Knights** (postcode CO5 0RX). Starting 7:30pm for 8pm it is very informal. All very welcome, there is no charge but those attending are asked to bring nibbles and/or something

to drink.

Dates for the diary: We will also be holding events at Silver End Congregational Church on the evenings of 18<sup>th</sup> January, 15<sup>th</sup> February and 15<sup>th</sup> March next year. Full details are yet to be confirmed.

Details of all our activities can be found on our website: [www.e2e.silverend.org](http://www.e2e.silverend.org). We also have a Facebook group (End to End Nature Care) where anybody is welcome to post images or details of local observations of fauna and flora (a taster for the photography evening perhaps?). I can always be contacted on [simon@e2e.silverend.org](mailto:simon@e2e.silverend.org) or 07947 388180 if anybody has any interesting local reports or questions about natural history, or if you would like to enquire about a bird or bat box.

## Simon Taylor



Photographing  
orchids at  
Whetmead, Witham

Bird and bat box  
building  
(Below)





Walnut Leaf mite gall  
*Eriophyes tristriatus*

(Always wanted to know what these were called Ed.)

22-spot ladybird larvae *Pysllobora vigintiduopunctata* (1)  
Amazing Photo Simon)



## Grow, Flourish. Succeed

### Academy Nursery



Opening September 2022, we are pleased to be offering a nursery for children ages 2 years and up.

Each session will cost £10 (£20 for a full day)


Nursery sessions will in term time:

Mornings: 8.45am - 11.45am

Afternoons: 11.45am - 2.45pm

All Day: 8.45am - 2.45pm

If you would be interested in a place, please email [nurserysil@connectedlearningmat.co.uk](mailto:nurserysil@connectedlearningmat.co.uk) with your child's name, date of birth and the sessions and days you require.

Aerial Photography	<p>COST EFFECTIVE, SAFE ACCESS, ROOF TOP INSPECTIONS BY DRONE WITH NO NEED FOR SCAFFOLD, TEMPORARY WORK OR STRUCTURES REQUIRED.</p>	Historic Buildings Monitoring
Barns	 <p>HIGH SIGHT</p>	Building Inspections
Chimneys	<p>NON DISRUPTIVE, FAST AND PROFESSIONAL SERVICE, SAME DAY REPORTS AND RECOMMENDATIONS FOR REPAIRS</p>	Estate Records
Roof Tops	<p>FULLY CAA AND CIOB REGISTERED, QUALIFIED AND INSURED SERVICE. CARRIED OUT BY EXPERIENCED SURVEYORS.</p> <p>Call to discuss your requirements; Chris: 07817219133 Jim: 07966403783 email: <a href="mailto:highsightse@gmail.com">highsightse@gmail.com</a></p>	

# ANGLIA TREE SERVICES

Specialist tree surgery

Residential & Commercial Customers

CROWN REDUCTION • FELLING • TOPPING

HEDGE TRIMMING • ALL GARDEN WORK

STUMP GRINDING

For a quick, tidy and friendly service call:

Tel: 01621 892831



7 DAYS A WEEK • EMERGENCY SERVICE AVAILABLE • FULLY INSURED



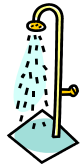
**Philip Little**

Property Maintenance Magician

Local service at local prices

Knowledgeable and friendly

**07973 129808 or 01376 515257**





Serving the Local Community for over 125 Years

# G. COLLINS & SONS

Funeral Directors Ltd



30 RAYNE ROAD, BRAINTREE, CM7 2QH

01376 342266

4 THE STREET, WHITE NOTLEY, CM8 1RH

01376 583750

[WWW.GCSFD.CO.UK](http://WWW.GCSFD.CO.UK)

**Beautiful Rooms For Rent  
In  
Witham & Braintree**

We have 4 Lovely houses  
2 in Witham—2 in Braintree  
With and Without en-suites

£90—£130 per Week

(All inclusive of Rates, Light, Heat, and with Broadband)

See our Website: - [www.jbwpartners.co.uk](http://www.jbwpartners.co.uk)

Or Call

**HELP WITH  
FUNERAL ARRANGEMENTS  
*RICHARDS*  
FUNERAL SERVICE**



**01376 513114**

78 Newland Street, Witham, CM8 1AH

From advice on how to register a death to making all the arrangements, we're here 24 hours a day.

Members of the National Association of Funeral Directors  
A British Owned Company [www.dignityfuneral.co.uk](http://www.dignityfuneral.co.uk)

***SpeedyBroadband.co.uk***

***Sick Computers my  
Speciality***

- Home Networking Problems Sorted Out
- Computer Viruses Removed
- Operating System Upgrades
- Upgrade to Windows 10

**FOR YOUR FREE SURVEY AND  
QUOTATION CONTACT**

**Peter Hope**

**[Peter.hope@speedybroadband.co.uk](mailto:Peter.hope@speedybroadband.co.uk)**

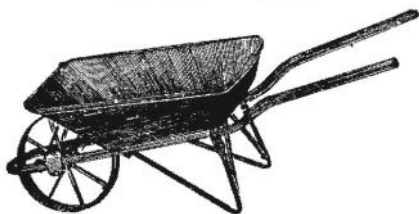
**Tel: 01376 502605**

**Mob: 07904 235101**

**Website**

**[www.speedybroadband.co.uk](http://www.speedybroadband.co.uk)**

**Ya Garden  
Cares**



**Thorough Attention on  
Bed Maintenance,  
Mowing & Clearance**

**Telephone  
Barry: 07732337626**

## **Memories From Rivenhall Folk of the Queen**

### **Juliet Brown**

My niece Juliet has a lovely picture of her meeting the queen when she was about 6 years old. This picture was taken by the Sun Newspaper. Juliet's family didn't read the sun, so it wasn't until a number of years later that they were made aware of the picture. A neighbour was doing some decorating and used an old copy of the Sun on the floor as you do. He was aware the little girl in the picture looked like his neighbour's child, saved it and showed it to them. From this they got in touch with the Sun and obtained an original copy.



## **Peter Hope Magazine Editor**

I didn't get to meet the Queen! The nearest I got to the Royal family was sitting next to the Queens cousin the Duke of Kent, at a business conference in the 80's, he had some business ambassador role at that time. Also, you may remember a picture from the magazine some 10 years ago that I took of Prince Philip out driving his carriage in Windsor Great Park which we visited regularly when our son David lived in Bracknell.

It was a beautiful sunny day, almost too warm for February however the views from the top of Windsor great park were stunning in the crystal clear air. Who would imagine the scene here some 20 years later on a late September afternoon!

In 2012 there were many deer in evidence and the castle was seen in all its glory. Also the planes coming in and out of Heathrow are a beautiful if not rather noisy spectacle. I think the Queen had lived in the most blighted house in England from the continuous noise.

Here is Prince Philip out for his ride.





*The Lord Chamberlain is  
commanded by Her Majesty to invite*

*Mrs. Cyril Taylor  
to a Garden Party  
at Buckingham Palace  
on Tuesday 13th July 1999 from 4 to 6 pm*

*This card does not admit*

To me it seems like yesterday but in July 1999 Dot Taylor (Tracy Scott's Mother) who lived at Henry Dixon Hall was invited to a Buckingham Palace Garden Party. Many of you will recognise her accomplice Lilian Pearce who still lives in Rivenhall.



On the 15th June 2013 a Resident of Rivenhall End Jackie Allan went to the Palace and was awarded the Queens Volunteer Reserve Medal (QVRM) The QVRM is a Military service medal presented by the Queen and has an equivalence to the BEM medal presented to Civilians who have given dedicated service to the community over many years.

Our own Keith Coleman was presented with the BEM in 2013



Finally the Memorial to Queen Elizabeth at St Marys Church

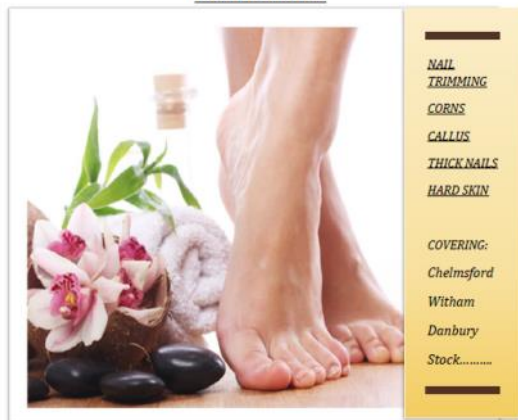


**The flag on the Church flying at half mast**

## FOOT HEALTH PRACTITIONER



### HOME VISITS



NAIL  
TRIMMING  
CORNS  
CALLUS  
THICK NAILS  
HARD SKIN

COVERING:  
Chelmsford  
Witham  
Danbury  
Stock.....

**JAMES NEWMAN (MCFHP,MAFHP)**

**TELEPHONE: 01376 519036**

**MOBILE: 07793971351**



**CARING FOR THE PETS OF WITHAM AND  
THE SURROUNDING AREA FOR 25 YEARS**

**SPECIAL O.A.P. SURGERY THURSDAYS**

**CAT ONLY CLINIC WEDNESDAYS**

**Late night surgery Wednesday till 8pm**

**Surgery Opening hours  
Monday to Saturday for**

**Tel: 01376 500038**

**www.brookendvets.co.uk**



Virus prevention, detection & removal  
Broadband, Networking, Wireless & Firewall set up  
Email & SPAM filtering  
Hardware Repairs & Upgrades  
Software Faults & Crashes  
Backup Solutions & Data Recovery  
Software Installation & Removal  
Hardware & Software Supplied  
Website Management • Computer Training

**Health  
Checks  
£39.99**

**Office: 01621 891064 • Mobile: 07990 565336**

**Email: support@pcdocops.co.uk**

**Website: www.pcdocops.co.uk**

Monthly subscription service available to provide complete "peace of mind" and allow you to spread the cost of your IT requirements.

Please contact for further information.

## **REYNOLDS CARPENTRY SERVICES**

**For all Carpentry, Joinery  
& Cabinet Making Requirements**

**CSCS Registered**

**30 Years Experience**

**4 Years Apprenticeship**

**City & Guilds and**

**Advanced City & Guilds Qualified**

**Free estimates – No obligation**

**All building work considered**

**Can also make items to order**

**also**

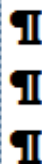
**'curtain poles, tiling, flat packs,  
kitchens, doors, sheds etc, no jobs  
too small'**

**Contact**

**07889 110962**

**Answer phone at other times**

# Jeremy Larke Television services



Telephone: 01376 513645

Mobile: 07947 601619

Email: telerepair@aol.com

All Television Systems Catered  
for Freesat, Freeview, Sky

- Installations & Repairs To all makes and models
- Full Plasma & LCD Fitting Service
- Wall Mount Brackets Supplied and Fitted
- Aerial & Satellite Dishes Fitted
- Freeview, Freesat & European Channels
- View and Control Your Sky in Other Rooms
- Aerial and Telephone Extension Points Installed



**Don't Delay Call Today**

## Janet C Davies

Dip. F.D. M.B.I.F.D

**BRAINTREE & KELEVEDON'S LADY FUNERAL  
DIRECTOR**

*Offering a full and Comprehensive Funeral Service*

**Telephone 01376 339300**

*For a Personal and Caring 24 hour service*

Local Chapel of Rest at Fern House 72 Coggeshall Road Braintree and  
Victoria House, Trews Gardens, Kelvedon

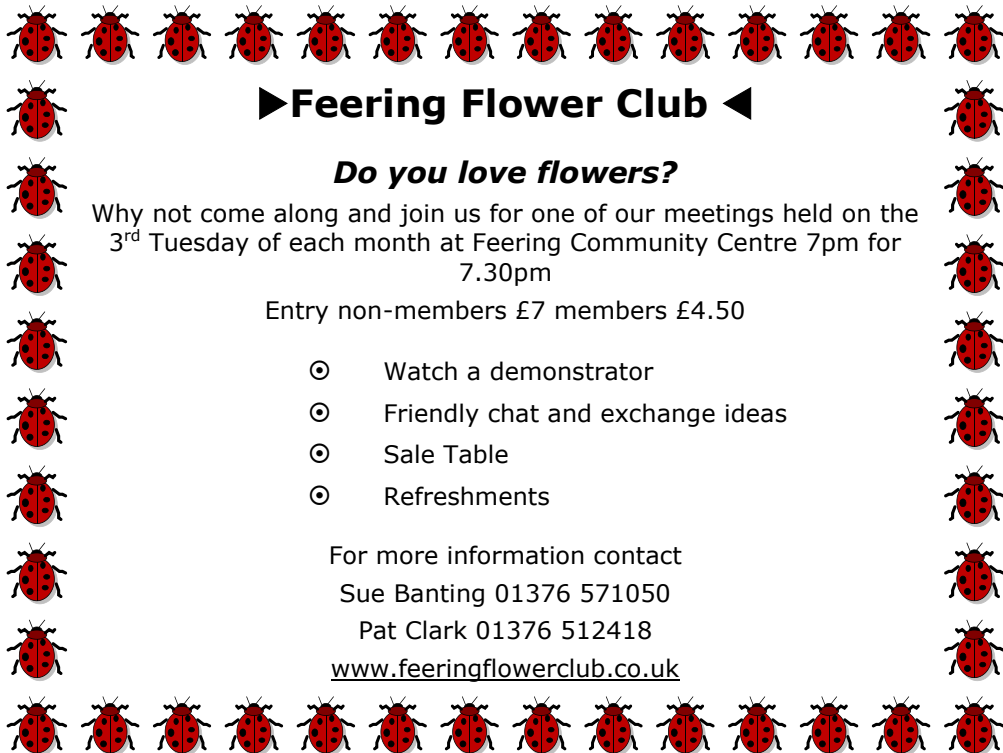
Funerals are arranged and carried out in the Traditional Manner but  
With 'The Gentle Touch'

Pre payment Plans available—Floral Tributes arranges—Woodland Burials  
Bereavement Care—Low Cost Simplicity Funerals - Memorials—Printing  
Catering—DWP Funerals

Part of the Hunnaball Family Group

Members of the National Association of Funeral Directors





## ►Feering Flower Club ◀

### *Do you love flowers?*

Why not come along and join us for one of our meetings held on the 3<sup>rd</sup> Tuesday of each month at Feering Community Centre 7pm for 7.30pm

Entry non-members £7 members £4.50

- ⊙ Watch a demonstrator
- ⊙ Friendly chat and exchange ideas
- ⊙ Sale Table
- ⊙ Refreshments

For more information contact

Sue Banting 01376 571050

Pat Clark 01376 512418

[www.feeringflowerclub.co.uk](http://www.feeringflowerclub.co.uk)

## DANIEL ROBINSON & SONS

Incorporating  
W C BROWN & SONS

**Independent Family Funeral Directors & Monumental Masons**

*A professional, caring, 24 hour service*

Private Chapel of Rest

Fleet of air conditioned limousines

Horse drawn funerals available

Traditional and contemporary funeral services to suit your wishes

Funeral pre-payment plans

Arrangements may be made in the comfort of your own home, if preferred

**Haslers Lane**  
**Great Dunmow**  
**Tel: (01371) 874518**

**7 Manor Street**  
**Braintree**  
**Tel: (01376) 320582**

**31 High Street**  
**Halstead**  
**Tel: (01787) 475533**

**[www.drobinson.co.uk](http://www.drobinson.co.uk)**

## **Turning the pages of History**

### **Research by Tracy Scott**

This month we are going to look at the happenings from 60 years ago from the October, Rivenhall Review.

Beetle Drives that were held in the Church (Village) Hall was always very well supported and at one of the 'Review' Beetle Drives the Prize winners were Mr. P. Ridgewell, Mrs Wright, Mrs Brown, Mrs Moss and Mrs Bright. Competition winners were Mrs Gentry, Sandra & Paull Boylan, Graham and David Smith.

Mr. Eric ('Dusty') Miller did extremely well at Rendlesham Grass Track (Suffolk) meeting on the 9<sup>th</sup> September, winning two First and one Third.

Good progress on the Parish Church restoration reported. The tower has now been completely resurfaced and the resurfacing of the North wall has reached an advanced stage.

A public meeting was held at the Church Hall where it was decided to hold a Flower and Vegetable show next year (It's first show 1963)

A sub-committee were elected to deal with the Schedule, Staging and Stewarding; Side shows, Entertainments and Refreshment committee.

1<sup>st</sup> Rivenhall Guide Company at the recent Divisional Rally held at Tiptree, the Rivenhall Guides took second place. The Patrol comprised: Patrol Leader Ann Goodwin, Mary Nisbett, Carol Prime, Sandra Boylan and Maureen Roper.

Harvest Festival: The Headmaster, Staff and Children of the Village School would like to thank the many parents and friends who gave produce for the School Harvest Festival, held in the School on Thursday, 11<sup>th</sup> October. After a short service by the children, some of the produce was sent to the Village people ill or in hospital, and the remainder was auctioned in aid of the School Fund by Mr. M. Williams, of Witham. The Sum of £20.9.0d. was realised and, as announced that evening, this is to be devoted to the School's Swimming Pool Fund. It is hoped to purchase a portable type of swimming pool ready for the school use in the summer of 1965.

Each month in the 'Review' there was a Competitions for Young People and these are the prize winning (2/6 each) stories from the Holiday Competition:

### A Trip to Cambridge – by Julia Izzard

Grandad, Daddy, Auntie, Clive and I packed some food to go to Cambridge. It was very hot. Auntie gave Clive and me a plum each and then we started eating sweets. We opened all the car windows because it was so hot. When we go there we parked the car in the carpark.

Suddenly, we saw a glider, then it went out of sight. We all went on the river and we saw some ducks. They ate most of my Opal Fruits. I gave them all my yellow ones and they liked them.

### A Trip to Derby – by Christopher Holliday

We started out at half past two, but David and I still felt tired at four o'clock when we arrived at Grantham, where we had a cup of tea. We asked my Dad, "How many more hours do we have to go?" He said, "About three".

Sure enough, we drove into the mine. It took quite a while to get loaded but when we did Daddy drove through a short cut which he knew. After about two hours we came into Cambridge. Then we went on to the A10 to Newmarket, where Daddy tipped the load.

### Fishing – by Peter Lucke

One morning I went down the brook fishing with my friend, Peter Turner. Peter caught a Bullhead; I caught a little fish.

Then it started to rain so we sheltered in some tunnels. When it stopped Peter and I ran up to his house; we were both soaked. I asked Mrs. Turner the time. She said "Half past five", so I ran home and changed my clothes.

When my Mother came home she brought me a jumper and a pair of trousers. I had my tea and watched television before going to bed.

"Rivenhall Review" Children's Club up to October 1962 issue had 60 members. With the latest being Edward and Teresa Organisciok, Trevor Mead, Rickard Puczkowski, Kevin and Terry Butcher.

Each month members would be wished Birthday Greetings and a many happy returns of the day to:

Roland Purdue (1953) Robin Baker (1961) Mary Holliday (1953) Jan Organisciok (1951) Christopher Holliday (1951) Paul Baker (1948) Christine Brown (1952) Sandra Boylan (1950) and Peter Clark (1953)



## **Chicken Orzo Soup, Orzo is pasta - shaped like rice**

### **INGREDIENTS:**

2 tablespoons olive oil

- 1 pound boneless, skinless chicken, breast or thighs – use left over from roast as well cut into 1-inch chunks
- Kosher salt and freshly ground black pepper
- 3 cloves garlic, minced
- 1 onion, diced
- 3 carrots, peeled and diced
- 2 celery sticks diced
- 1/2 teaspoon dried thyme
- 5 cups chicken stock
- 2 bay leaves
- 3/4 cup uncooked orzo pasta
- 1 sprig rosemary
- Juice of 1 lemon
- 2 tablespoons chopped fresh parsley leaves

## DIRECTIONS:

Heat 1 tablespoon olive oil in a large stockpot or over medium heat. Season chicken thighs with salt and pepper, to taste. Add chicken to the stockpot and cook until golden, about 2-3 minutes; set aside.

Add remaining 1 tablespoon oil to the stockpot. Add garlic, onion, carrots and celery. Cook, stirring occasionally, until tender, about 3-4 minutes. Stir in thyme until fragrant, about 1 minute.

Whisk in chicken stock, bay leaves and 1 cup water; bring to a boil. Stir in orzo, rosemary and chicken; reduce heat and simmer until orzo is tender, about 10-12 minutes. Stir in lemon juice and parsley; season with salt and pepper, to taste.

Serve immediately.

COLEMANS COTTAGE FISHERIES

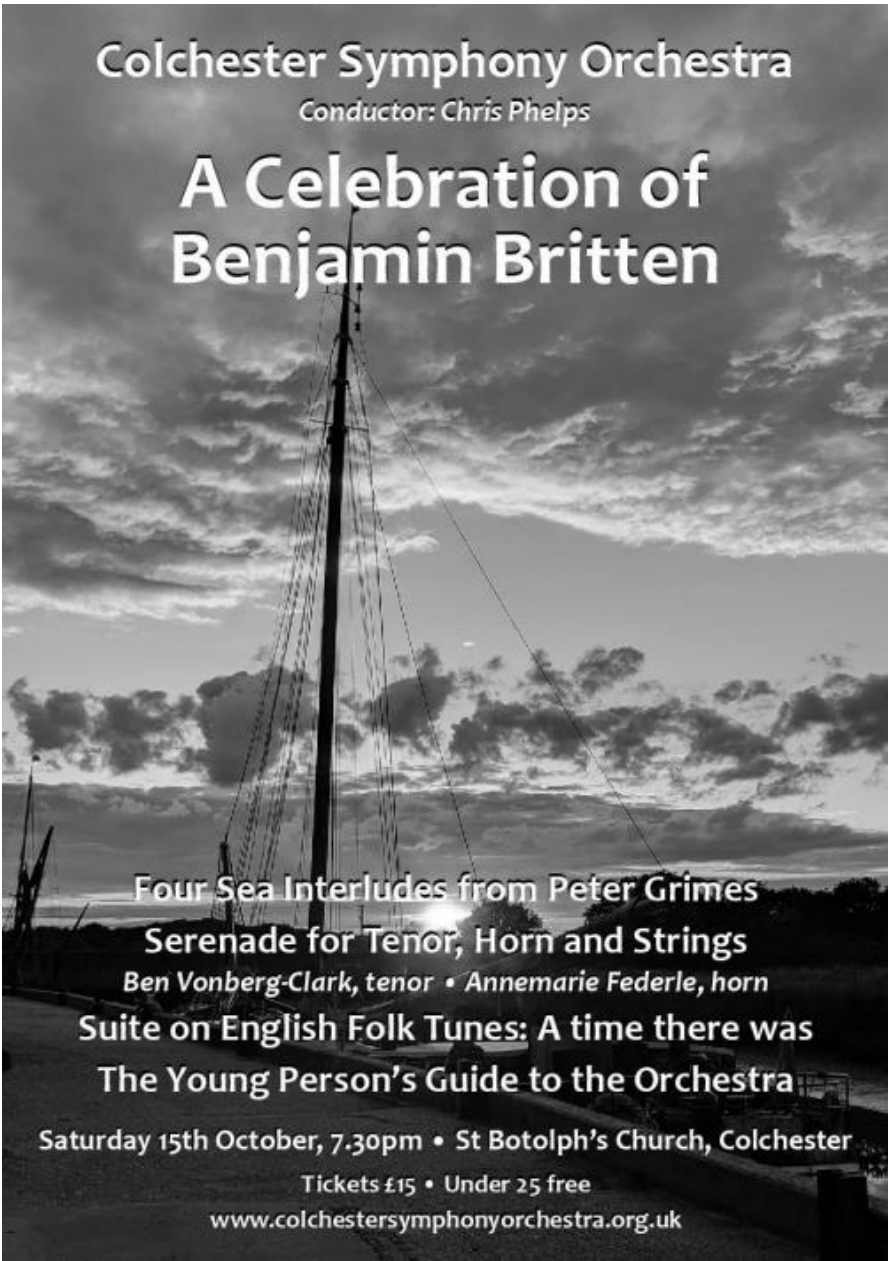
## *Lakeview Tearooms*

**Come and enjoy the view whilst  
having a bite to eat**



**Open Thursday to Sunday 9am to 3pm**  
**Breakfast, Lunches**  
**Bar, Snacks**  
**Afternoon Tea**  
**Sunday Roast (01376 516383 to Book)**

For more information go to:  
<http://www.colemansfisheries.co.uk/witham/cafe/>  
Colemans Cottage Fisheries  
Little Braxted Ln, Witham CM8 3EX  
FREE PARKING 01376 516383



**Colchester Symphony Orchestra**

*Conductor: Chris Phelps*

# **A Celebration of Benjamin Britten**

**Four Sea Interludes from Peter Grimes**

**Serenade for Tenor, Horn and Strings**

*Ben Vonberg-Clark, tenor • Annemarie Federle, horn*

**Suite on English Folk Tunes: A time there was**

**The Young Person's Guide to the Orchestra**

**Saturday 15th October, 7.30pm • St Botolph's Church, Colchester**

**Tickets £15 • Under 25 free**

**[www.colchestersymphonyorchestra.org.uk](http://www.colchestersymphonyorchestra.org.uk)**



## **Pet Service Sunday**

**Oct 9 2022**



**To mark St Francis of Assisi Saints Day we are holding a special pet service**

**At**

**St Francis Church — Silver End 3 p.m**



**Bring Your Pets to Church for a special service dedicated to Saint Francis Patron Saint of animals**  
**The service will be held outside weather permitting**  
**adults, children & pets are all welcome**  
**join us for a pet blessing**



**Rivenhall Village  
Hall Hire**  
**a message from  
Ruth Hassey**



**Ruth Hassey**

**Admin** 1 m · 🌐

**We have some availability for regular hall hire:**

**Wednesdays morning and afternoon**

**Thursdays morning and afternoon**

**Fridays all day**

**Sundays for event hire.**

**If you are interested to book please contact our bookings secretary:**

**[rivenhallvillagehall@gmail.com](mailto:rivenhallvillagehall@gmail.com)**



# Quiz Night



Friday 14<sup>th</sup> Oct 2022- 7.30 p.m  
Henry Dixon Hall - Rivenhall End

£12 per Ticket including:  
Fish and Chip Supper  
(Veg / Vegan Catered for)



Teams of up to 8 players  
Team captains to get tickets from:-  
Ann Kerr:- Tel 01376 515437  
Or Ann Riddleston Tel 01376 515400

Bring your own nibbles drinks and glasses



# THE 2022 FAMOUS RIVENHALL RACES



It is twenty glorious years ago that the Famous Rivenhall Races were first run in Rivenhall Village Hall. On **Saturday 29<sup>th</sup> October** they return once more. Profits from this popular evening help fund various charitable activities throughout the village including the senior citizens gifts, Santa's Musical Sleigh, carol singing round the tree on the green with the Chelmsford Silver band followed by the **TOTALLY FREE** Christmas get-together in the village hall.

Tickets are **£12.00** and can be purchased from Bob Turner, Jack Prime, Lilian Pearce and John Macrae (Rivenhall Millennium Committee).

Free fish & chip / chicken & chip / sausage & chip supper included. Raffle. Bring your own drinks and glasses.

Doors open at **7:00 pm** and the races start at **8:00 pm** prompt.

## Organisations in Rivenhall

Clerk to Parish Council	Keith Taylor	516975
Email parishclerk@rivenhallparishcouncil.net	meets every first Tuesday	
End to End Nature Care	Simon Taylor	01621 810141
Gardening Club	Carole McCarthy	512781
Meets on 2nd Tuesday at 7.30pm in Village Hall		
Carpet Bowls	Mick Marshall	512836
Meets every Thursday at 7.30pm in Village Hall		
Playing Fields Association	Mick Marshall	01376 512836
Spread Your Wings Dance Acam	Laura Pearson	01376 741317

## Facilities

Hire of Village Hall	email rivenhallvillagehall@gmail.com	
Hire of Henry Dixon Hall	Tracy Scott	571551
Oak Store Rivenhall "Open All Hour" Tel AJ		01376 538838

## Organisations in Silver End

Clerk to Parish Council	Mrs B. M. Temple	618464
Email parishclerk@silverendparishcouncil.gov.uk		
Bowls Club	Paul Mann	07551 006906
Children's Centre	Faye Savage	587960
Neighbourhood Police	Braintree Policing Dial 101	
Congregational Church	Sharon Gray	583913
Friendship Club	Maureen Green	585275
Silver End Gad Abouts	Denise Sullens Smith	07952 992782
Gardening Club	Liz Woor	585586
Guiding Group	Carol Hutchings	07857 663959
Neighbourhood Watch	Judy Hill	07896 975839
Scouting Group	Elaine Hall on +44	7885 489788
St Mary's Church (R.C.)	Vivian Phillips	583598
Tennis Club	Jason Cairns	584581
Workers Educational Assoc.	Brian Gillion	583706
Luncheon Club	Helen Thomson	583255
Doctors Surgery		583387
Silver End Heritage Society	Jackie Nesbitt	07707 084608
Silver End United Football Club	Mark Edgell	584639 Web
Site www.silverendunitedfc.co.uk		
Women's Institute	Brenda Warnes	07931 548193
Community Warden	Jackie Windard	07785 515526
Post Office in Co-op - please note that it closes at Lunchtime 1-2pm		
Closes 1 pm Wednesday and 12.30 pm Saturday		
Library: Tues & Thurs - 2pm to 6pm Saturday 9am to 1pm		

HUNNABALL

Family Funeral Services



Here **whenever** you need us

Funerals | Memorials | Pre-paid Funeral Plans

**Hunnaball of Witham**

1 Coach House Way, Newland Street, Witham CM8 1YJ

**01376 511592**

[www.hunnaball.co.uk](http://www.hunnaball.co.uk)

**JANET C DAVIES**

Lady Funeral Directors



**Our Ladies  
in Hats**

*"funerals with  
a gentle touch"*

Funerals | Memorials  
Pre-paid Funeral Plans

**Janet C Davies of Kelvedon**

233 High Street, Kelvedon CO5 9JD

**01376 573691**

[www.hunnaball.co.uk](http://www.hunnaball.co.uk)

# DRH LANDSCAPES

Est. 1987

Quality Comes 1<sup>st</sup>

**Garden Landscape and Design – Hard Landscaping – Soft Landscaping  
Grounds Maintenance for Private and Commercial Premises**

- Are you planning to redesign and landscape your garden?
- Does your garden just need a little TLC or a complete makeover?
- Are you looking for assistance with regular garden maintenance or perhaps a one-off visit to get things back in order?
- Is your lawn looking tired? Would you like a new replacement lawn or artificial lawn instead?

We are a family run business with over 30 years of experience working in the ever changing world of landscape management, business regulations and horticulture, with full public and employer liability insurance, as well as being a fully registered waste carrier with the Environmental Agency.



OFFICE: 01376 514142

We welcome...



EMAIL: [info@drhlandscapes.com](mailto:info@drhlandscapes.com)

[www.drhlandscapes.com](http://www.drhlandscapes.com)

Harcog Centre, 77-83 Maldon Road, Witham, Essex CM8 1HP

